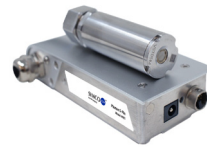




# LOW VOLTAGE AND CONTROL IONIZATION SOLUTIONS



Product	5941	5832	5842	5645 LP	4901	4903
Strategy	Sensing Grille for Monitoring <3V Balance Voltage	 <b>Low Offset Voltage by Close-Loop Feedback Control with Novx Inside or Novx System</b> Novx Inside: Passive Antenna Direct Connect to Ionizer Novx System: Active or Passive Antenna Connect to Novx 3352 or Novx 3362 for Ionizer Control			Soft X-ray Technology Using Photon Generating Tube	
Feature	<ul style="list-style-type: none"><li>• ±3V or better balance</li><li>• Warning/alarm 2 level notification</li><li>• Compact Size</li><li>• Auto-clean System</li><li>• Collimator option</li></ul>	<ul style="list-style-type: none"><li>• FMS Connection</li><li>• Novx Inside or Novx System</li><li>• Auto-clean System</li><li>• Angled Collimator</li><li>• Warning/alarm 2 level notification options</li></ul>	<ul style="list-style-type: none"><li>• 2-3-4 Fans Versions For Various Coverage</li><li>• FMS Connection</li><li>• Auto-Clean System</li><li>• Standalone, Novx Inside, or Novx System</li></ul>	<ul style="list-style-type: none"><li>• Centralize Power, Control, FMS</li><li>• Intelligent MP Control Software</li><li>• Air-Assist Capability</li></ul>	<ul style="list-style-type: none"><li>• 24 mm Dia. Pin Head</li><li>• Replaceable Photon Generating Tube</li><li>• Head Fail &amp; System Fail Alarms</li></ul>	<ul style="list-style-type: none"><li>• Slim Size</li><li>• Replaceable Photon Generating Tubes</li><li>• 8 Tubes Max Per Bar Controller</li><li>• Head Fail &amp; System Fail Alarms</li></ul>
Discharge	<4 sec @ 12" (30.5 cm) w/o collimator <3 sec @ 12" (30.5 cm) w/collimator	<2 sec @ 12" (30.5 cm)	<2 sec @ 18" (45.7 cm)	15 sec @ 24" (61.0 cm)	<1 sec @ 6" (15.2 cm)	<1.5 sec @ 12" (30.5 cm)
Balance	±3V or better	±3V or better balance; ±1V w/Novx Inside or Novx System	±3V or better balance; ±1V w/Novx Inside or Novx System	<±20V Standalone, <±5V w/Novx System, or Novx Inside	Inherently Balanced 0V	Inherently Balanced 0V
Ion Emission	Steady-state DC Technology	Steady-state DC Technology	Steady-State DC Technology	Modulated Pulse (MP) Technology	Soft X-ray Technology	Soft X-ray Technology
Cleanroom Class	ISO 14644-1 Class 3	ISO 14644-1 Class 3	ISO 14644-1 Class 3	ISO 14644-1 Class 1 & Extended ISO Class 1	Zero Particle Generation	Zero Particle Generation
Airflow	17 cfm max	4 Fan Speeds 125 cfm, high	Per Fan (cfm) 125 high, 117 med-hi, 76 med-low, 41 low	1-3.5 lpm/nozzle w/air-Assist	N/A	N/A
Dimension	4.33"H x 3.15"W x 1.60"D (11.0 x 8.00 x 4.06 cm) w/o bracket, w/o collimator 4.33"H x 3.15"W x 2.93"D (11.0 x 8.00 x 7.45 cm) w/o bracket, w/collimator	7.27"H x 6.95"W x 2.97"D (18.47 x 17.65 x 7.54 cm) w/bracket, w/o angled collimator	2-fan: 32"L x 2.75"H x 5.44"W (81.3 x 6.99 x 13.8 cm) 3-fan: 42"L x 2.75"H x 5.44"W (106.68 x 6.99 x 13.8 cm) 4-fan: 52"L x 2.75"H x 5.44"W (132 x 6.99 x 13.8 cm)	2.6"H x 1.3"W x 13.8/17.7/23.6/33.5/39.3/45.3/ 51.2/57.1/63.0/69.0/74.8/80.7/86.6/92.5"L (6.5 x 3.4 x 35/45/60/85/100/115/130/ 145/160/175/190/205/220/235 cm)	Pin Head: 0.94" dia. x 3.35"L (2.40 x 8.50 cm) Ionizer: 3.3" x 1.3" x 4.8"L (8.38 x 3.40 x 12.4 cm) w/bracket	Front Module: 1.4"W x 1.1"H x 11.8, 17.7, 23.6, 35.4, 47.2"L (3.6 x 2.7 x 30, 45, 60, 90, 120 cm) Controller: 8.46"W x 2.20"H x 5.35"L (21.5 x 5.60 x 13.6 cm)
Weight	0.70 lb (0.32 kg) w/o collimator 0.72 lb (0.33 kg) w/collimator	2.2 lb (1 kg) w/bracket	2-fan: 5.5 lb (2.49 kg) 3-fan: 7.8 lb (3.55 kg) 4-fan: 10 lb (4.55 kg)		0.875 lb (0.40 kg)	Front Bar (lb/kg) (Length cm) 0.93/0.42 (30), 1.32/0.60 (45), 1.72/0.78 (60), 2.58/1.17 (90), 3.48/1.58 (120)